



RECP #: 752748

RECORDED 5/8/2019 AT 1:15 PM BK# 2620 PG# 1790
Debra K. Lee, CLERK OF LARAMIE COUNTY, WY PAGE 1 OF 1

STATE OF WYOMING CORNER RECORD

(In compliance with the CORNER PERPETUATION AND FILING ACT, Wyoming Statutes, 1997 Section 33-29-140, et. seq., and the Rules and Regulations of the Board of Registrations for Professional Engineers and Professional Land Surveyors)

EAST QUARTER CORNER SECTION 9, T. 18 N., R. 61 W., 6TH P.M., LARAMIE COUNTY, WYOMING

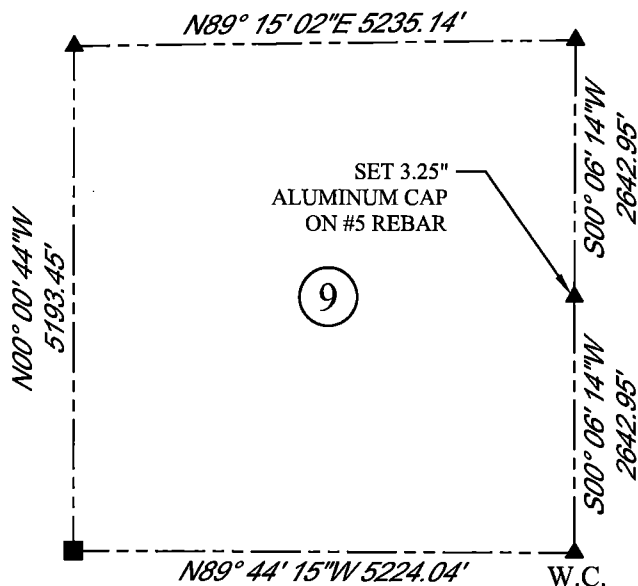
GLO: A SANDSTONE 16X9X5 SET 12 IN DEEP MARKED 1/4 ON W. SIDE FOR 1/4 SEC. COR.

FOUND: NOTHING

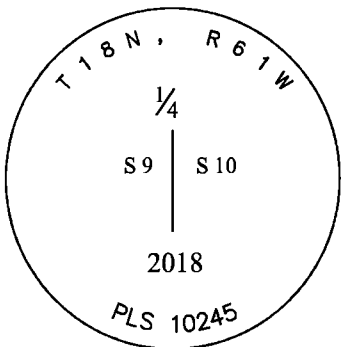
SET: SET A 3.25" ALUMINUM CAP ON #5 REBAR, 1" ABOVE SURFACE MARKED AS SHOWN. SET A FIBERGLASS ROD ON N. SIDE. POSITION RE-ESTABLISHED BY SINGLE PROPORTION.



SCALE: NONE
NORTH DETERMINED BY
G.P.S OBSERVATIONS



SET 3.25" ALUMINUM CAP, STAMPED AS SHOWN



DATE OF FIELD WORK: 10/17/2018 OFFICE REFERENCE: MERIDEN

LEGEND:

- FOUND BLM CAP
- FOUND USFS CAP
- FOUND STONE
- FOUND PRIVATE MONUMENT
- ◆ CALCULATED POSITION
- ▲ SET MONUMENT (LS10245)
- SECTION LINE

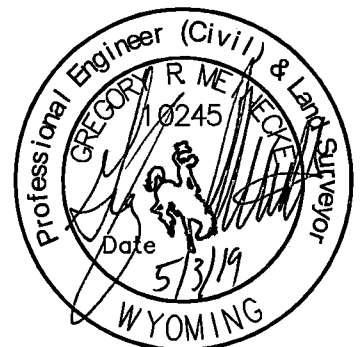
CROSS INDEX DIAGRAM

	1	2	3	4	5	6	7	8	9	10	11	12	13	14	15	16	17	18	19	20	21	22	23	24	25
A																									
B																									
C		6				5				4				3					2					1	
D																									
E																									
F																									
G		7				8			9	●	10			11					12						
H																									
J																									
K																									
L		18				17				16				15					14						13
M																									
N																									
O																									
P		19				20				21				22					23						24
Q																									
R																									
S																									
T		30				29				28				27					26						25
U																									
V																									
W																									
X		31				32				33				34					35						36
Y																									
Z																									

WOOD
2615 AVIATION DRIVE
SHERIDAN, WY 82801
PH: 307-675-6400

wood.

THIS CORNER RECORD WAS
PREPARED BY ME OR UNDER
MY DIRECTION AND
SUPERVISION,
SEAL AND SIGNATURE



CORNER NAME: EAST QUARTER SECTION: 9 T. 18N., R.61 W. ; 6TH P.M. CROSS-INDEX # G-13
SBRPELS/PLSW: MARCH 1994; PLSW JANUARY 1998